

movement research

2015 gala

Moira Breman

honoring



Bebe Miller



Tere O'Connor

MOVEMENT RESEARCH GALA 2015

HONORARY CO-CHAIRS

RACHEL FORD, LAURIE UPRICHARD, TALVIN WILKS

HONORARY COMMITTEE

ELLA BAFF, JAMES BAKER, CATERINA BARTHA, WENDELL BEAVERS**, KAREN A. BELL, ROB BESSERER, PHILIP BITHER, BARBARA BRYAN*, JEAN BUTLER, BEN CAMERON, WALLY CARDONA & AIN GORDON, HILARY CLARK, COLIN COCHRAN & PAUL LANGLAND, NANCY A. COENEN, DIANA CRUM, PENELOPE DANNENBERG, MOLLY DAVIES & POLLY MOTLEY, SHERRY DOBBIN, DAVID DORFMAN**, ELEANOR DUBINSKY, DOUGLAS DUNN, TESS DWORMAN, CATHY EDWARDS*, SEAN ELWOOD, DEVYNN EMORY, STEPHEN FACEY* & JAY WEGMAN, SIMONE FORTI**, BOO FROEBEL*, VALLEJO GANTNER, SHERRI GELDIN, ERIN GERKEN, ANNA GLASS COQUILLOT*, JENNIFER GOODALE & MARK RUSSELL, PAMELA M. GREEN, NEIL GREENBERG, MOLLY GROSS*, MIGUEL GUTIERREZ, CALEB HAMMONS, TRAJAL HARRELL, ANGIE HAUSER & CHRIS AIKEN, CYNTHIA HEDSTROM**, CHUCK HELM, KATHLEEN HERMESDORF, K.J. HOLMES, ISHMAEL HOUSTON-JONES*, JUDY HUSSIE-TAYLOR, MICHAEL INGLE, KRISTINA ISABELLE, JOHN JASPERSE, BILL T. JONES** & BJORN AMELAN, DARRELL JONES, JUSTIN JONES, SARA JULI & CHRIS AJEMIAN, RYAN KELLY, JON KINZEL & STANFORD MAKISHI, THOMAS KRIEGSMANN & SHANTA THAKE-KRIEGSMANN, CLAUDIA LA ROCCO, PHYLLIS LAMHUT, AARON LANDSMAN, ELIZABETH LECOMPTE, RENEE LEMIEUX, RALPH LEMON & JIMENA PAZ, DANIEL LEPKOFF**, RUBY LERNER, SHEILA LEWANDOWSKI, MATTHEW LYONS, BRIAN MACDEVITT, KRISTIN MARTING, MICHAEL MAZZOLA, FRANCES MCDORMAND, YVONNE MEIER, JOSEPH V. MELILLO, SARAH MICHELSON*, JENNIFER MILLER, SAM MILLER, VIRGINIA A. MILLHISER, OISÍN MONAGHAN, JENNIFER MONSON, SARA CRAWFORD NASH, JEREMY NELSON & LUIS LARA MALVACÍAS, LISA NELSON, JODEE NIMERICHTER, CYNTHIA OLIVER, HEATHER OLSON, MARY OVERLIE**, NICKY PARAISO, CHRYSA PARKINSON, STEVE PAXTON**, CARLA PETERSON*, CRAIG PETERSON, SUSAN VAN PELT PETRY, TRICIA PIERSON, ALYSON POU, YVONNE RAINER**, WILL RAWLS*, MARY READ, SUZZY ROCHE, BRIAN ROGERS, MATTHEW ROGERS, ANN ROSENTHAL, MIKE ROSS, LUCY SEXTON, DAVID SHEINGOLD*, LINDA SHELTON, JEREMY SHERBER, LESLIE SINGER, LAUREN REE SLONE, ROSEANNE SPRADLIN, JANET STAPLETON, STEVE STASO*, LINDA STEIN & PAUL VIDICH, MICHÈLE STEINWALD*, ELIZABETH STREB, PETER TAUB, DAVID THOMSON, MAURA TIERNEY, DONNA UCHIZONO, CATHY WEIS, REBECCA WENDER & IAN DOUGLAS, DANA WHITCO*, CHRISTOPHER WILLIAMS, JENNIFER WRIGHT COOK, GUY YARDEN, LIZ YOUNG & PAUL O'NEIL, JAWOLE WILLA JO ZOLLAR, GREG ZUCCOLO

*Board of Directors

**Advisory Board

PAST HONOREES

Simone Forti & Mark Russell, 2014

Cathy Edwards, Sam Miller, Jennifer Monson, 2013

Anne E. Delaney, Ishmael Houston-Jones, Yvonne Meier, 2012

Carla Peterson & the Original 1983 Cast of Trisha Brown's *Set and Reset*: Trisha Brown, Iréne Hultman, Eva Karczag, Diane Madden, Stephen Petronio, Vicky Shick, and Randy Warshaw, 2011

Cynthia Hedstrom & DANCENOISE, 2010

Molly Davies & Steve Paxton, 2009

Joseph V. Melillo & Meredith Monk, 2008

Yvonne Rainer, 2007

Marion Koltun Dienstag, 2006

Laurie Uprichard, 2005

Micki Wesson, 2004

Honorary Co-Chairs
Rachel Ford, Laurie Uprichard, Talvin Wilks
and the Board of Directors welcome you
to the Movement Research 2015 Gala

Honoring

MOIRA BRENNAN
BEBE MILLER
TERE O'CONNOR

June 8, 2015
Judson Memorial Church
New York City

PROGRAM OF EVENTS

6:00pm RECEPTION

7:00pm WELCOME AND REMARKS

Barbara Bryan, Movement Research Executive Director
Cathy Edwards, Movement Research Board of Directors, Co-Chair
Stephen Facey, Movement Research Board of Directors, Co-Chair

DINNER

Chef: Tom McCauley of MOUNTAIN
Catering Coordinator: Justine Lynch of MOUNTAIN
Kitchen Captains: Paul Benney, Courtney Krantz and Abigail Levine
Dinner Captains: Levi Gonzalez and Lily Gold

8:30pm PERFORMANCES

and Toasts to Honorees Moira Brennan, Bebe Miller and Tere O'Connor

10:00pm DANCE PARTY

with DJ LVJay (Larissa Velez-Jackson)

PERFORMANCES

DARIA FAIN

Collecting Cometary Organics in a Heart Shape Candy Box

with guest artist vocalist Samita Sinha

This is part of a series of allostatic pieces of the moment in which I turn to the body as an instant reading connecting oneself to both local and illimitable environments to expound the performance. Allostatic is the process by which the body responds to stressors in order to regain homeostasis.

| Video Tribute to Moira Brennan
| Toast by Rachel Ford
| Remarks by Moira Brennan

JOANNA KOTZE

*FIND YOURSELF HERE: Quartet - MR Gala**

Choreography: Joanna Kotze in collaboration with the performers

Performers: Jonathan Allen, Joanna Kotze, Stuart Singer, Netta Yerushalmy

Composer/Sound designer: Ryan Seaton

FIND YOURSELF HERE is a collaboration between three dancers, three visual artists and a composer with a New York premiere at Baryshnikov Arts Center, September 17-19, 2015. Here are some excerpts created as a quartet just for you, just for the honorees, just for tonight.

CYNTHIA HOPKINS

Excerpts from *The Alcoholic Movie Musical*, her new work in progress

| Video Tribute to Bebe Miller
| Toast by Talvin Wilks
| Remarks by Bebe Miller

ANGIE HAUSER and DARRELL JONES

Verge Redux, a replay of a replay of a piece inside a piece

Inspired by the Choreography and Direction of Bebe Miller for *A History* (2012)

Dramaturgy by Talvin Wilks

Music by Hahn Rowe originally for *Verge* (2001)

| Video Tribute to Tere O'Connor
| Toast by Laurie Uprichard
| Remarks by Tere O'Connor

HEATHER OLSON

*BLEED*** 2013 (excerpt)

Choreographer: Tere O'Connor

Composition/Sound Design: James Baker

Costume Design: Walter Dundervill

CHRYSA PARKINSON

For Tere

Lighting for the evening designed by **Joe Levasseur**

HONOREE BIOS



photo by Jayne Wexler

MOIRA BRENNAN is the program director for the MAP Fund at Creative Capital. Under her 12-year leadership, MAP has dramatically increased the number of proposals reviewed annually and expanded the program's formidable impact on contemporary American performance. Ms. Brennan transitioned MAP from an in-house program at Rockefeller Foundation to an independent fund incorporating multiple stakeholders, including the Doris Duke Charitable Foundation and the Andrew W. Mellon Foundation. Ms. Brennan also designed and administered the Creative Exploration Fund to encourage continued risk-taking among MAP grantees with a record of success, and introduced General

Operating grants for structural support to organizations and independent artists. She represents the program throughout the country as a speaker on the complex interplay between creativity, art, power, and money in contemporary culture. Moira sits on the board of Movement Research and Apple Village Arts. A former editor at *Ms.* magazine, Ms. Brennan has written about arts and social justice for a variety of publications, including *American Theater*, *Ms.*, and *Community Arts Network*. She has acted as a consultant for arts programs including Movement Research's *Critical Correspondence* and MORE LIFE: Interdisciplinary Studies and Genocide at the California Institute for the Arts. In addition to her work in the arts, Ms. Brennan consults with the Focusing Institute, a New York-based nonprofit, for Focusing in Afghanistan, a Kabul-based program that teaches coping skills to victims of trauma. She is a graduate of New York University Tisch School of the Arts.



photo © Bebe Miller

BEBE MILLER, a native New Yorker, first performed her choreography at NYC's Dance Theater Workshop in 1978, after receiving her MA in Dance from OSU in 1975. She formed Bebe Miller Company in 1985 to pursue her interest in finding a physical language for the human condition, a connecting thread throughout her work. Collaboration being fundamental to her working process, she has worked with composers, artists, writers, filmmakers, designers and dramaturgs, along with the dancers who share her studio practice and from whom she has learned what dancing can reveal. Bebe Miller's work has been performed internationally in Europe, Asia and the African continent, and nationally in

venues ranging from Brooklyn Academy of Music's Next Wave Festival, San Francisco's Yerba Buena Center for the Arts, REDCAT in Los Angeles and the Wexner Center for the Arts, to numerous colleges and universities around the country. Her choreography has

been commissioned by Dayton Contemporary Dance Company, Oregon Ballet Theater, Boston Ballet, Philadanco, Amsterdam's Neue Dans Groep, and the UK's Phoenix Dance Company, among others. She has been honored with four New York Dance and Performance "Bessie" Awards, fellowships from the Ohio Arts Council and the Guggenheim Foundation; she is a United States Artists Ford Fellow and a 2012 Doris Duke Artist Award Recipient, and in 2013 received the New York Live Arts David White Award. A Professor in the Ohio State University Department of Dance since 2000, she is a Distinguished Professor in OSU's College of Arts and Humanities and received an Honorary Doctorate from Ursinus College in 2009.



photo by Natalie Fiol

TERE O'CONNOR is Artistic Director of Tere O'Connor Dance and a Center for Advanced Studies Professor of Dance at the University of Illinois at Urbana-Champaign. He has created over 40 works for his company and toured them throughout the US, Europe, South America and Canada. He has created numerous commissioned works for other dance companies, including the Lyon Opera Ballet, White Oak Dance Project and solo works for Mikhail Baryshnikov and Jean Butler. O'Connor received a 2013 Doris Duke Performing Artist Award, is a 2009 United States Artist Rockefeller Fellow, and a 1993 Guggenheim Fellow among numerous other grants and awards. His work has been supported by the National

Endowment for the Arts, New England Foundation for the Arts/National Dance Project, The MAP Fund, and many others. He has been honored with three New York Dance and Performance "Bessie" Awards. In 2014, he was inducted into the American Academy of Arts and Sciences. An articulate and provocative educator, O'Connor has taught at festivals and universities around the globe for 25 years. He is an active participant in the New York dance community, mentoring young artists, teaching, writing, and volunteering in various capacities. His most recent work, *BLEED*, premiered at Brooklyn Academy of Music's Next Wave Festival in December 2013 and toured throughout the United States. O'Connor will premiere a new work for 12 dancers at The Kitchen in December 2015.

PERFORMANCE BIOS

Jonathan Allen works in painting, collage, video and performance. He has exhibited at Lu Magnus, PS122, Exit Art, Socrates Sculpture Park, Artists Space, Bravin Lee, Caren Golden, Oliver Kamm and BRIC Rotunda. He has participated in LMCC's Workspace & Swing Space residencies, has had residencies at Bogliasco, Cill Rialaig, and Blue Mountain Center, and has received grants from Pollock-Krasner, Chenven, Puffin, George Sugarman, and Brooklyn Arts Council. He has collaborated with Joanna Kotze since 2011.

Originally from France, **Daria Faïn** is a Brooklyn-based choreographer. Her creative work is informed by extensive research in cognition, human behavior and Eastern philosophies of the body. With poet-architect Robert Kocik they founded the Prosodic Body, a field of research that explores language as a vibratory medium that interrelates art, health, and social change. In 2008 they created The Commons Choir, a performance group with a variable cast of roughly 30 singers, actors, dancers, poets, musicians, composers and people that, through language, movement and sound, engages in healing art practices while interacting with social consciousness and global economic/environmental realities.

Angie Hauser has been a dancer/collaborator with Bebe Miller Company since 2000. She has contributed to BMC works *Verge*, *Landing/Place*, *Necessary Beauty*, and *A History*, receiving a "Bessie" Award for her work in *Landing/Place*. In addition to her work with BMC she is a dance maker, performer, and teacher who has been presented throughout North America and Europe. She has an ongoing collaboration with dance artist Chris Aiken creating evening length improvisation performances in collaboration with musicians and other dancers. She is an Assistant Professor at Smith College, Northampton, MA.

Cynthia Hopkins (cynthiahopkins.com) is an internationally acclaimed musical performance artist: she writes songs, records albums, and creates groundbreaking performance works that intertwine truth and fiction, blurring the lines between edification and entertainment. Her work has been honored with many awards, including a 2015 Doris Duke Artist Award, a 2015 Grants to Artists Award from the Foundation for Contemporary Arts, a 2010 Guggenheim Fellowship, and the 2007 Alpert Award in Theater. She is currently at work on a musical comedy routine about alcoholism titled *The Alcoholic Movie Musical*, scheduled to premiere in October 2015 at The Bushwick Starr.

Darrell Jones has performed with a variety of choreographers and companies such as Urban Bush Women, Ralph Lemon, Min Tanaka and Bebe Miller. Along with his own work and research in (e)feminized ritual performance, he has formed alliances with artists whose works gather inspiration and influence from the various ecologies with which they come into contact. Darrell is presently a full-time faculty member at the Columbia College Chicago Dance Center.

Joanna Kotze received the 2013 "Bessie" Award for Outstanding Emerging Choreographer. Her work has been presented at American Dance Institute, Danspace Project, Bard College, Jacob's Pillow, NYLA Studio Series, DNA, Movement Research at Judson Church, and other venues and galleries. Her next evening-length piece will have its New York premiere at Baryshnikov Arts Center, September 17-19. Joanna is a 2013 Movement Research Artist-in-Residence, is on faculty at MR and is currently teaching the Movement Research Repertory course at Eugene Lang College, The New School for Liberal Arts. She was recently chosen for a Camargo Foundation residency in France through MR, the Camargo Foundation and the Jerome Foundation.

Heather Olson is a dancer, choreographer, and mom. She has received "Bessie" Awards for her body of work with Tere O'Connor and for her performance in Yanira Castro's *Dark Horse/Black Forest*. She has also appeared in the work of Jennifer Allen, Ivy Baldwin, Faye Driscoll, Levi Gonzalez, Stacy Grossfield, Susan Rethorst, Vicky Shick, and Larissa Velez-Jackson. Olson's choreography has been commissioned by The Chocolate Factory, Olgas Zitluhinas Dejas Kompanija, Sugar Salon, and Dance Theater Workshop, and has been presented by Danspace Project, Dance Roulette, Galapagos Art Space, La MaMa, Movement Research at the Judson Church, Catch!, Solonova Arts Festival, 100 Grand, and Creature Feature in Berlin, Germany.

Chrysa Parkinson is a dancer living in Brussels, Belgium and Berkeley, California. She lived in New York for many years and performed with Tere O'Connor Dance, Irene Hultman, Mia Lawrence, Jennifer Monson and Mark Dendy, among others. She began traveling to Belgium in 2000 to work on improvisational performance with Zoo/Thomas Huert and David Zambrano. Since then she has also performed with: Veli Lehtovaara, Remy Heritier, Boris Charmatz, Andros Zins-Browne, Rosas/Anne Teresa De Keersmaeker, Jonathan Burrows, Mette Ingvartsen, Philip

Gehmacher, Eszter Salomon, John Jasperse, Deborah Hay, Alix Euyradi, Meg Stuart and Joaquim Koester. She has taught in the US, Europe and Australia, and yearly at P.A.R.T.S. (be) since 1998. Chrysa's writing and films have been published and distributed internationally. Her most recent documentation is available at Oralsite.be The Dancer as Agent Collection. She is the Director of the New Performative Practices MFA program at DOCH in Stockholm.

Ryan Seaton is a composer, guitarist and saxophonist living in NYC. His band, Callers, has released three critically acclaimed albums and toured extensively throughout Europe, Canada and the United States. In addition, Seaton has been commissioned by many artists including Dark Sky, Here We Go Magic, Joanna Kotze, Ictus and Lance Gries.

Stuart Singer is a Brooklyn, NY based performer and teacher. He is developing projects with John Jasperse, Beth Gill, Gwen Welliver, Joanna Kotze and Andrew Ondrejcek, and is currently a guest lecturer in dance at Princeton University. He has been making dances with Joanna since 2009.

Samita Sinha is a composer and vocal artist who combines tradition with experiment to create new forms, combining raw energy with a deep grounding in North Indian classical music, embodied practices, and folk and ritual music in several languages. www.samitasinha.com

Larissa Velez-Jackson is a NYC-based choreographer/multi-platform artist. She was a 2012 Movement Research Artist-in-Residence, a boo-koo resident '14 at Gibney Dance Center and an El Museo del Barrio AIR '14. Her last evening-length work, *Star Crap Method* premiered at Chocolate Factory Theater in 2014. She will premiere an evening-length work of her song and dance collaboration, YACKEZ, in NYC, 2016. www.larissavelez.com

Netta Yerushalmy's work has been recognized with a 2012 Guggenheim Fellowship. Her work has been presented by Danspace Project, The Joyce Theater, American Dance Festival, Harkness Festival, La MaMa, Hebbel am Ufer (Berlin), Curtain-Up (Tel-Aviv) & many others. She has performed with Nancy Bannon, Karinne Keithley Syers, Mark Jarecki, Doug Varone, Ronit Ziv, Metropolitan Opera Ballet, and has worked closely with Joanna since 2009.

DINNER

MOUNTAIN is a hybrid space featuring healing food, acupuncture, naturopathy, massage, yoga and more. Located in Crown Heights, one block from the Brooklyn Botanic Gardens, MOUNTAIN pioneers the movement towards healthy living for people from all walks of life. The regions of MOUNTAIN (the Classroom, the Clinic, the Dispensary, and the Apothecary Kitchen) symbiotically support each other to form a cohesive and beautiful environment. Carving new directions in the culinary field through dishes like Tonifying Chicken Soup with Chinese Herbs and Magenta Ginseng Cold Pressed Juice, MOUNTAIN offers food as medicine. www.ilovemountain.net

PERFORMANCE FUNDING CREDITS

***FIND YOURSELF HERE** had its world premiere at American Dance Institute (ADI) where it also received production development support from ADI's National Incubator residency program. FIND YOURSELF HERE is made possible in part by: a 2014 Jerome Foundation general grant; a 2014 New York Foundation for the Arts BUILD grant; a Creative Development Residency with support from the Jacob's Pillow Dance Award Initiative; a 2014 LMCC Process Space artist residency (LMCC.net); The Movement Research Artist-in-Residence Program, funded, in part, by the Davis/Dauray Family Fund, the Andrew W. Mellon Foundation, and by public funds from the New York City Department of Cultural Affairs in partnership with the City Council; a Yellow House Educational Stipend, and Brooklyn Arts Council (BAC). Residency support by: the Bogliasco Foundation, Djerassi and Baryshnikov Arts Center (with additional support from the Martha Duffy Award). Subsidized rehearsal space at: Mark Morris Dance Center, New York Live Arts, Alvin Ailey Dance Center and Movement Research. AND by many generous individuals including Leadership Circle members.

****BLEED** was made possible by the New England Foundation for the Arts' National Dance Project, with lead funding from the Doris Duke Charitable Foundation and additional funding from The Andrew W. Mellon Foundation and the Boeing Company Charitable Trust; The MAP Fund, a program of Creative Capital supported by the Doris Duke Charitable Foundation and the Andrew W. Mellon Foundation; The National Endowment for the Arts; the New York State Council on the Arts; the New York City Department of Cultural Affairs; University of Illinois Campus Research Award; MANCC; individual donors, Big Tree Productions, Inc.; The Lower Manhattan Cultural Council; The Krannert Art Museum at the University of Illinois in Urbana-Champaign.

SPECIAL THANKS

HONOREES

Moira Brennan, Bebe Miller, Tere O'Connor

CO-CHAIRS

Rachel Ford, Laurie Uprichard, Talvin Wilks

PERFORMERS

Jonathan Allen, Daria Fain, Angie Hauser, Cynthia Hopkins, Darrell Jones, Joanna Kotze, Heather Olson, Chrysa Parkinson Ryan Seaton, Stuart Singer, Samita Sinha, Larissa Velez-Jackson, Netta Yerushalmy

VISIONARY SUPPORTERS

Creative Capital Foundation, Mary Lou Dauray, Stephen Facey & Jay Wegman, Sam Miller, Barbara Sherber, Maura Tierney

BENEFACTORS

Ivy Baldwin, Cathy Edwards, Simone Forti, Frances Craig Guillemot, Brian MacDevitt, Stanford Makishi & Jon Kinzel, Virginia Millhiser, Liz Radke, Paul O'Neil & Liz Young, Chrysa Parkinson, Steve Staso, Guy Yarden

PATRONS

Rob Bailis, Tod & Kay Brennan, Carol Bryce Buchanan, Nancy A. Coenen, Eleanor Dubinsky, Robert Flynt, Vallejo Gantner, Allison & Joey Gordon, Molly Gross, Thomas O. Kriegsmann & Shanta Thake, Renee Lemieux & Peter Zajonc, Ralph Lemon & Jimena Paz, Matthew Lyons, Tere O'Connor, Celia O'Donnell, Carla Peterson, Brian Rogers, Stuart Shapiro & Janice Lee, David Sheingold, Anna Sperber & Peter Kerlin, Linda Sue Stein & Paul Vidich, Elizabeth Streb, Peter Taub, Laurie Uprichard, Cathy Weis, Talvin Wilks, Katie Workum, Lucien Zayan, Jawole Willa Jo Zollar

ARTIST COMMITTEE

Hilary Clark, Tess Dworman, Caitlin Ewing, Erin Gerken, Kelly Onder, Lauren Slone, Katie Stehura

THANK YOU

To Justine Lynch and Tom McCauley of MOUNTAIN for creating and preparing the incredibly special meal for the Gala, and also to Guy Yarden for once again providing insight, guidance and help with bringing the meal together

Dinner Kitchen Team Paul Benney, Courtney Krantz and Abigail Levine

Dinner Captains Levi Gonzalez and Lily Gold

Judson Memorial Church Congregation, Donna Schaper, Micah Bucey, Michael Ellick, Erich Hahn, Paul Russell

An anonymous donor, for the A to Z Pinot Noir and A to Z Pinot Gris

Lagunitas Brewery for the beer

Gimme! Coffee for the delicious coffee

Film Forum and Jimmy's No. 43 for their generous gift bag contributions

Tess Dworman and James Baker for compiling the Tere O'Connor Mixtape

Gristedes for helping to feed our amazing team of volunteers

Joe Levasseur for Lighting Design

Alice MacDonald, Zac Mosely and Kay Ottinger for Production

Quentin Burley and Alex Escalante for documenting the evening

Catherine Galasso and Bridget Grissom for Video Tributes

Cathy Edwards for the flowers

Steve Staso for the tote bags

Tal Yarden for generously lending us his projector

VIDEO TRIBUTES

THANK YOU to everyone who provided photos and footage or gave interviews for the video tributes: Rob Besserer, Meredith Boggia, Barbara Bryan, Moira Brennan, Ben Cameron, Hilary Clark, Jenny Gill, Charles Gowin, Miguel Gutierrez, Caleb Hammons, Cynthia Hedstrom, Emily Johnson, Daniel Alexander Jones, Deborah Jowitt, Megan Kendzior, Ralph Lemon, Ruby Lerner, Bebe Miller, Kat Norcutt, Tere O'Connor, Cynthia Oliver, Heather Olson, Lillian Osei-Boateng, Chrysa Parkinson, Kim Savarino, Victoria Sendra, Jeremy Sherber, Lauren Slone, David Thomson, Talvin Wilks, Jawole Willa Jo Zollar

VOLUNTEERS*

Martita Abril, Paul Benney, Rachel I. Berman, Ilona Bito, Jenny Boissiere, Racy Brand, Kim Brandt, Nico Brown, Megan Caniglia, Diana Crum, Lillie De, Lindsey Dietz Marchant, Mariam Dingilian, Bradley Teal Ellis, Dana Florin-Weiss, Philip Ellis Foster, Patrick Gallagher, Emily Giovine, Dmitri Glickman, Lily Gold, Alvaro Gonzalez, Charles Gowin, Leanna Grennan, Allison Grissom, Miguel Angel Guzmán, Ashley Handel, Tuva Hildebrand, John Hoobyyar, Isabella Hreljanovic, Emie Hughes, Kirstin Kapustik, Kathleen Kelley, Amanda Kmett'Pendry, Courtney Krantz, Lisa Kusanagi, Sarah Lass, Lise Leclerc, Abigail Levine, Elena Light, Ying Liu, Nicole Mannarino, Heidi Morgan, Kat Norcutt, Tara O'Con, Maya Orchin, Stephanie Oteyza, Alexandra Pinel, Christina Reppert, Lindsay Reuter, Edward Rice, Jenna Riegel, Melinda Ring, Sarah A.O. Rosner, Adrian Saich, Lily Bo Shapiro, Laurel Snyder, Rory Solomon, Nathan Stark, Brittany Sylwestrak, Tatyana Tenenbaum, Nicole Touzien, Nadia Tykulsker, Saúl Ulerio, Alessandra Urso, Farah Velten, Lauren Vermillion, Julia Vickers, Stephanie Walker, Marya Wethers, Rainey White, Sarah White-Ayón, Tara Willis

*as of June 3rd

SPECIAL HONOREE FUNDS

DONATE ONLINE

<http://www.movementresearch.org/performanceevents/gala/contribute.php>

MAIL A CHECK

Movement Research
Attn: 2015 Gala
55 Avenue C | New York, NY 10009
(specify fund in check memo)

Moira Brennan Writers and Editors' Fund

This new Fund created in honor of Moira will support fees for writers and editors of *Critical Correspondence*, Movement Research's online publication and the Movement Research *Performance Journal*.

Bebe Miller Studies Project Fund

This new Fund created in honor of Bebe will support artist fees for a series of artist-instigated panel discussions, round tables, performances and/or other formats that engage issues of aesthetics, philosophy and social politics relevant to the dance and performance community.

Tere O'Connor Process Lab Fund

This new Fund created in honor of Tere will support artist fees for movement-based artists to share their individual processes through this series of three-hour sessions which provide an opportunity for a dynamic exchange amongst peers in a lab-type setting.

MESSAGES FROM ARTISTS

FOR YOUR
rigorous, patient, presence.
day in and day outness
tens of thousands of phone calls, emails
trips to the mountain top
gracious humor, ease, and love
work that changes the world.
THANK YOU, MOIRA.

Ann Carlson

Moira! How lucky we are to experience the grand mix of your humility, bravery and rambunctious intelligence. You: a sneaky engine, revving up the American Performance Machine...

Pearl Damour, Lisa D'Amour & Katie Pearl

I could say all of the things about how you help people make better art, take risks, do wild things, engage our communities, dream bigger and bigger, listen deeply and change the potential of live performance. I could comment upon your unwavering faith in possibility. Really, we could all go on and on. But I am impacted the most by your heart and the humanity you bring to an enormous job. In the end, I think that this is the most important. We love you, Moira.

Nick Slie, on behalf of Mondo Bizarro

Moira, many years ago I got a hug from you that has grounded me since. Thank god we get to be intertwined with Moira Brennan; her calm, smart, and steady passion!

Emily Johnson

Moira Brennan creates momentum, encouraging a turn from elitist, selfish, self-important and closed habits toward inclusive, open, humble, risk-taking and expansive impulses. She reminds me, always, of the broad context, the bright constellations, and the unfolding arc of our collective work. Moira Brennan is, indisputably, the TRUTH!

Daniel Alexander Jones

PROGRAM OFFICER AT FANCY FOUNDATION: We are always interested in what the community has to say.

ANDREW: But the perception is that you won't listen humbly and openly.

PROGRAM OFFICER [SMILING SMUGLY]: Humbly and openly? I'm not sure you'll ever find a foundation that operates like that, Andrew.

ANDREW: MAP Fund, Moira Brennan. She works nationally, she's transparent, humble, and curious. You should get to know her.

PROGRAM OFFICER: [...]

Andrew Simonet

Congratulations to Bebe Miller for this recognition of her outstanding work! PMG Arts Management was honored to represent her piece *A History* and continues to represent a curated roster of award-winning artists who are unique, invigorating, and culturally relevant. Bebe! Let me know when you're ready!

Much love, Pam

Pamela Green, PMG Arts Management

Moira gets our collective love juices goin'! We're glad the whole world knows how marvelous and available she is to love. From those of us out here in the sticks, thank you for your tireless championing of new work. We wish we could love on you in person. Congratulations!

Rude Mechs

Congratulations Moira Brennan from your friends at HERE!
We are pleased to join Movement Research in recognition of your intrepid leadership and innumerable contributions to the field. We are eager to see where you take us next!

HERE Arts Center



TISCH SCHOOL
OF THE ARTS

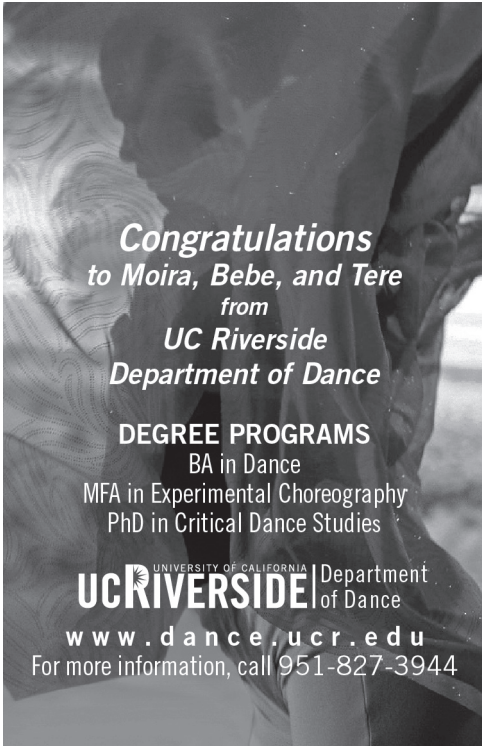
CONGRATULATIONS MOIRA, BEBE AND TERE

For All You Have Shared With Us.

With best wishes,
Allyson Green and Dana Whitco

**Rock and Roll and
Twist and Shout
Moira, Bebe, and Tere!**
(And you too Movement Research!)

ABRONS
ARTS HENRY STREET
CENTER SETTLEMENT
PLAYHOUSE CENTENNIAL 1915-2015



*Congratulations
to Moira, Bebe, and Tere
from
UC Riverside
Department of Dance*

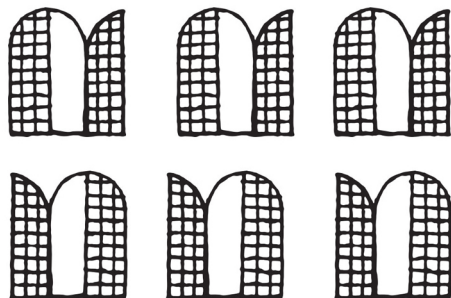
DEGREE PROGRAMS

BA in Dance
MFA in Experimental Choreography
PhD in Critical Dance Studies

UCRIVERSIDE UNIVERSITY OF CALIFORNIA | Department
of Dance

www.dance.ucr.edu

For more information, call 951-827-3944



**PS122 Salutes
Moira Brennan
Bebe Miller &
Tere O'Connor**



The Field

Moira, Bebe & Tere!

***You make the dance world the stupendous,
miraculous and heart-wrenching place that it is.
From the bottom of our hearts – thank you!***

xoxo

The Field

ART GROWS HERE

CONGRATULATIONS TO

Distinguished Professor and
The Ohio State University
Department of Dance Alumna
BEBE MILLER on this well
deserved recognition of her
many contributions to the field,
and her ongoing investigations
and curiosity.



**THE OHIO STATE
UNIVERSITY**

COLLEGE OF ARTS
AND SCIENCES

Announcing:

Bebe Miller Company
Dance Making Intensive
Aug 2-8, 2015

follow us @OSUDance

dance.osu.edu

DEPARTMENT OF DANCE [BFA • MFA • PhD]

Photo by Lois Greenfield

Congratulations to all three artists, especially Bebe Miller...

who has made our stages
and Ohio State's dance
students all the brighter.

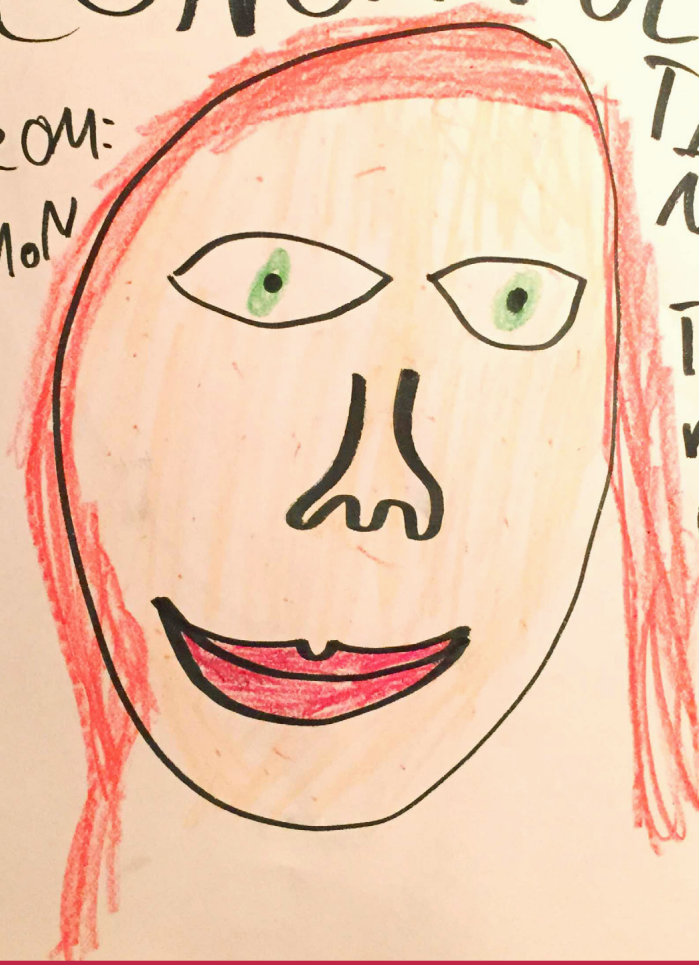


Congratulations and gratitude to this year's 2015 MR honorees, Moira Brennan, Bebe Miller and MANCC artist Tere O'Connor. Big **LOVE** and so much **RESPECT** to each of you!

From all of us at MANCC (Maggie Allesee National Center for Choreography)
- Carla, Ansje, Rachel, Chris and Mary

CONGRADULA

FROM:
SiMoN



TIONSI
TIO:
M-
O-
i-
R-
a-
!

Moira,

*Love and warm
congratulations from your
colleagues, friends, & family.*



Congratulations Tere! We Love You!

Dance Department | University of Illinois, Urbana-Champaign

Photo by Natalie Fiol

Secondary
Surface
Rendered



August 14 & 15
Marfa, TX

photo: Susan Simmons

crowleytheater.org lowerleft.org marfallivearts.org



MOUNTAIN

HEALING FOODS
ACUPUNCTURE
NATUROPATHY
MESSAGE
HERBS
YOGA

www.ilovemountain.net

instagram & twitter @ilove_mountain

903 Franklin Ave BK NY / (718) 771 2476

Creative Capital



DORIS DUKE
PERFORMING ARTIST
AWARDS

Congratulations to Movement Research Honorees

Moira Brennan

Bebe Miller

Tere O'Connor

From the Creative Capital Family

Creative Capital and its partner programs, The Doris Duke Performing Artist Awards and the MAP Fund, surround adventurous artists in all disciplines with the tools they need to realize their visions and build sustainable practices.

Check out all our programs online at creative-capital.org, ddpaa.org, and mapfund.org.

It takes a village.....

Linda Adams	Saqqara Dogs	Darrell Jones	Susan Murphy	Lily Skove
Phillip Adams	Amy Downs	Isaac Julien	Naoko Nagata	Scott Smith
Holly Anderson	Jeanine Durning	Jonathan Kane	Valarie Oliveiros	Earnie Stevenson
Caterina Bartha	Lupe Echevaria	Robin Klingensmith	Cynthia Oliver	Ivan Sygoda
Caroline Beasley-Baker	Steven Edwards	Tamar Kotoske	Ryan Osborn	Ken Tabachnick
Vita Berezina-Blackburn	FIA	Robert Kushner	Elizabeth Page	Colleen Thomas
Jay Bolotin	Kathleen Fisher	Maria Lakis	Scott Pask	Erin Thompson
Barbara Boolukos	Kit Fitzgerald	Eve Andrée Laramée	Anthony Phillips	Keith Thompson
Anne Bradner	Robert Flynt	Joyce Lawler	Lisa Phillips	Kevin Thompson
Chloe Brown	Fred Frith	Renee Lemieux	Lenny Pickett	David Thomson
Barbara Bryan	Hearn Gadbois	Ralph Lemon	Tricia Pierson	Jenny Tool
Don Byron	Sarah Gamblin	Anna Leo	Stan Pressner	Aliza Trujillo
Elizabeth Caron	Nicole Garlando	Colleen Leonardi	Liz Prince	Mike Vargas
Nikki Castro	Ain Gordon	Amy Lieberman	Linda Randall	Michael Wall
Bradford Chapin	Mara Greenberg	Mimi Lien	Renee Redding-Jones	David Wallingford
Cody Chen	Allyson Greene	Chris Lindsay-Abaire	Byron Richard	Steven Washington
June Choi	Lucy Guerin	Kathryn Lundquist	Mary Richter	Jeremy Weichsel
Maya Ciarrocchi	Angie Hauser	Christian Marclay	Ann Rosenthal	Dana Whitco
Janet Clancey	Heidi Henderson	Catherine Massey	Hahn Rowe	Lynn Wichern
Elisha Clark	Kathleen Hermesdorf	Albert Mathias	Kathie Russo	Talvin Wilks
Scott Clark	Robin Holcomb	Katherine Maurer	J. Ryan Graves	Rebecca Wortman
Sara Coffey	Christopher Hyams-Hart	Michael Mazzola	Sadiq	Melissa Wynn
Kristen Cooperkline	Kristina Isabelle	Carol McDowell	Robert Schefman	Cheng-Chieh Yu
Frances Craig	Leo Janks	Conor McTeague	George Sempepos	Yen-Fang Yu
Scott deLaHunta	Bethany Johns	Diana Mitchell	Shelley Senter	Peter Zajonc
Anne DeVelder	Ted Johnson	Darren Morze	Harvey Siegel	Cathy Zimmerman

Thanks, all.

Launched!
Bebe Miller Company's
first digital book

**DANCE
FORT** *A History*



Bebe Miller Company

THE OHIO STATE UNIVERSITY

digitalbookstore.osu.edu
free download

**BEBE MILLER COMPANY
DANCE MAKING INTENSIVE
AUGUST 2-8, 2015**

weeklong workshop in
collaborative strategies
for choreography,
performance
and
dance
dramaturgy

study with:
**BEBE MILLER
ANGIE HAUSER
DARRELL JONES
TALVIN WILKS**

for info, fees & application:
www.bebemillercompany.org
info@bebemillercompany.org

Angie Hauser & Darrell Jones
photo: Michael Mazzola

THE OHIO STATE UNIVERSITY



NEW ENGLAND FOUNDATION FOR THE ARTS

MOIRA BRENNAN

BEBE MILLER

TERE O'CONNOR

Congratulations for your contributions to the field!

www.nefa.org

79 Berry St. Brooklyn, NY

CAFE - COLETTE . COM

CAFE
COLETTE



★
pentacle

Congratulations



MOIRA BRENNAN
BEBE MILLER
TERE O'CONNOR

Dance.
Artistry.
Disability.

community
conversations

July 8, 2015

John Jay College
524 W 59th St, NYC

FREE. Registration is required.
Reserve by contacting
Dance/NYC at
212.966.4452 (Voice
only) or DanceNYC.org

#disabilitydance



ADA NYC
AMERICANS WITH DISABILITIES ACT

dance/NYC
IN ALLIANCE WITH DANCE/NEW YORK

NYC
Mayor's Office for
People with Disabilities

Art Beyond Sight
A City of New Yorks Initiative

CU
NY
The City
University
of
New York



Hotel Delmano

Oysters - Wine - Spirits

82 BERRY ST. Brooklyn, NY

ROCK SALT LOVE

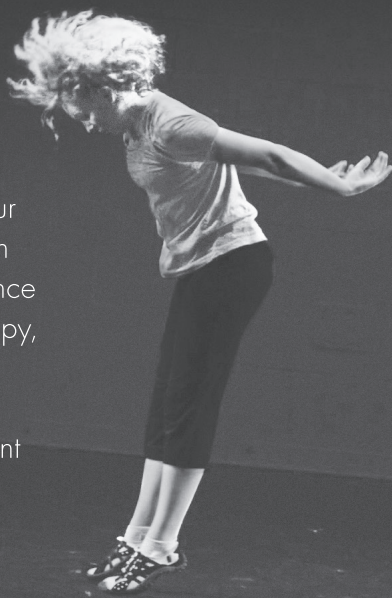
SARAH • LAWRENCE • COLLEGE

GRADUATE PROGRAMS

DANCE

Sara Rudner, Director

Whether you're looking to make serious training in dance part of your undergraduate liberal arts education or ready to earn your M.F.A. in Dance or M.S. in Dance/Movement Therapy, Sarah Lawrence College's small classes and one-on-one support for individual creativity and development make it the place to be. All just 15 miles from New York City!



For more information:

Undergraduate Admission Office: 914-395-2510

Graduate Studies Office: 914-395-2371

Accepting Applications for Fall 2015

sarahlawrence.edu/DanceGala

BAX | Brooklyn Arts Exchange
congratulates

**Moira Brennan,
Bebe Miller
and
Tere O'Connor**

*Your contributions to the dance
community have revealed and
transformed our creative world.*

bax.org
artistservices.bax.org
events.bax.org
youth.bax.org
thebuilding.bax.org

pica.org

T : B A : 1 5
TIME - BASED ART

FESTIVAL
PORTLAND, OREGON
09:10:15 - 09:20:15

PASSES
ON SALE
IN JUNE

PICA

PHILIPPE QUESNE, LA MÉLANCOLIE DES DRAGONS
PHOTO BY MARTIN ARGYROGLO

Contact Quarterly

celebrates

*Movement Research, Bebe Miller,
Moira Brennan, and Tere O'Connor
for their lifetime commitment to the
art and service of dance. Thank you!*

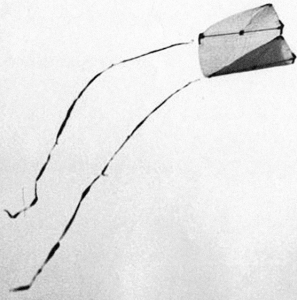


photo © Bill Arnold

CQ

a vehicle for moving ideas
Journal • Chapbook • Kneepads
Books & DVDs • Writings Online
www.contactquarterly.com

Congratulations Moira, Bebe, and Tere!

Your friends at
Gibney Dance thank
you for your service
to the field.

GIBNEY DANCE

SEMINARS / WORKSHOPS / PERFORMANCES / WALKER ART CENTER / FILM / DANCE / EVENTS

Congratulations
to Moira,
Bebe, Tere ...
and of course
Movement
Research!

Walker Art Center Minneapolis, MN

walkerart.org

CONGRATULATIONS TO MOIRA, BEBE, AND TERE TRUE ACTIONEERS



AND TO
MOVEMENT RESEARCH
ON THEIR 2015 GALA!!

**Congratulations to
Moira Brennan
Bebe Miller
and
Tere O'Connor**

UCLA
WORLD ARTS & CULTURES/DANCE

Degrees Offered:
BA & MFA in Dance
BA in World Arts & Cultures
MA and PhD in Culture & Performance



wacinfo@arts.ucla.edu
www.wacd.ucla.edu

The Kitchen
joins
Movement Research
in saluting

Moira Brennan,
Bebe Miller,
and
Tere O'Connor!

CONGRATULATIONS
to the Magnificent Moira

Anassa Kata
from
Joan Shigekawa

Moira

Through your steadfast vision and effort at MAP, you have facilitated the support of 564 projects, thousands of artists, and impacted countless arts workers and audience members. You are an amazing champion and we are forever grateful for your partnership.

Much love,
Lauren Slone & David Sheingold

Dear Bebe, Moira, and Tere,

We love you!



Danspace Project



chashama loves Julie Atlas Muz

www.chashama.org

chashama
GIVING ARTISTS THE
SPACE TO CREATE



chashama loves Julie Atlas Muz

www.chashama.org

chashama
GIVING ARTISTS THE
SPACE TO CREATE

MESSAGES FROM FRIENDS



Forging ahead into the unknown takes courage. Taking a risk on an idea that is untested, unpopular, unproven, even preposterous and possibly dangerous, requires bravery. Moira Brennan personifies these traits. She is the fiercest warrior I know when it comes to advocating for contemporary practices and ideas in the field of performance. Furthermore, she does so with an enviable level of humility, grace, and consideration. We will know the true impact she has had when we someday look back with pride on our era's contributions to the canon, riddled with artists and projects that Moira has championed. Until then, we can still praise her and we can learn oh so much from her.

Caleb Hammons

Tere's works play with the internal/external, the natural/supernatural. His ability to transcend the expected is astounding.

Cynthia Hedstrom

I have been looking at Tere O'Connor's work and writing about it for decades, and am always stunned when confronting it. I think of him as a wise, imaginative, and deeply skilled gardener in the fields of movement—choosing, layering, mingling, severing, pruning, until he makes a work that is abloom with images and forces, enigmatic yet quivering at the edges of familiarity.

Deborah Jowitz

The impact Tere has had on my life has been so profound, that I have difficulty speaking about it. For 18 years, being in Tere's dances made it possible for me to express the deepest things about being human; the things that are impossible to express with words. His dances have felt like home. Tere is truly a genius maker of art, thinker of life...and teller of jokes. Working with him, and being friends with him, has been one of the great gifts of my life.

Heather Olson



photo by Genevieve Stephenson

“You and Bebe should be married.” That’s what my daughter, Chelsea, used to say. “Why not, dad, why don’t you marry her? Your dances together look like you’re married, already married.”

Yes, maybe that’s true, I said. But she’s a better dancer, artist, I said, More true, somehow. Her body is smarter. She dances like a shaman. I don’t, can’t. Wish I could. But I learned as much as I could from her in our work together. Yes, I love Bebe Miller. (She knows more about me than most people.) **Ralph Lemon**



Rob Besserer, Erin Gerken, Tere O'Connor and Hilary Clark, Paris 2007

movement research

movement research is one of the world's leading laboratories for the investigation of dance and movement-based forms. Valuing the individual artist, their creative process and their vital role within society, Movement Research is dedicated to the creation and implementation of free and low-cost programs that nurture and instigate discourse and experimentation. Movement Research strives to reflect the cultural, political and economic diversity of its moving community, including artists and audiences alike.

BOARD OF DIRECTORS: Moira Brennan, Barbara Bryan, Cathy Edwards, Stephen Facey, Boo Froebel, Anna Glass Coquillot, Molly Gross, Ishmael Houston-Jones, Sarah Michelson, Carla Peterson, Will Rawls, David Sheingold, Steve Staso, Michèle Steinwald, Dana Whitco

ARTIST ADVISORY COUNCIL: niv Acosta, Laurie Berg, Maura Donohue, Walter Dundervill, Alex Escalante, Marjani Forté, Danielle Goldman, Joe Levasseur, Melanie Maar, Jennifer Miller, Mariangela Lopez, Margaret Paek, Jill Sigman, Kathy Westwater

ADVISORY BOARD: Wendell Beavers, David Dorfman, Simone Forti, Cynthia Hedstrom, Bill T. Jones, Daniel Lepkoff, Mary Overlie, Steve Paxton, Yvonne Rainer, Jim Staley

MOVEMENT RESEARCH STAFF

Executive Director Barbara Bryan
Director of Artist Programs Levi Gonzalez
Programming Director Amanda Loulaki
Program & Events Coordinator Anna Adams Stark
Development Manager Megan Kendzior
Operations Manager Greer Dworman
Media & Communications Manager Catherine Galasso
Coordinator, Movement Research at the Judson Church and Open Performance Kay Ottinger
Dance Makers in the Schools Diana Crum

SPRING 2015 FESTIVAL CURATORS

Layla Childs, Jaamil Olawale Kosoko, and Samita Sinha

ARTISTS-IN-RESIDENCE

2015 Hadar Ahuvia, Ursula Eagly, Camilo Godoy, Lily Gold, Molly Poerstel, Jen Rosenblit, Vicky Shick, Gwen Welliver, André Zachery
2014 Alex Escalante, Erin Ellen Kelly, Yanghee Lee, Jen McGinn, Antonio Ramos, Melinda Ring, Nami Yamamoto
2013 Ivy Baldwin, Jeanine Durning, Whitney Hunter, Sam Kim, Joanna Kotze, Stanley Love, Juliette Mapp, Mina Nishimura, Ni'Ja Whitson

MOVEMENT RESEARCH PUBLISHING

Performance Journal Lauren Bakst, Moriah Evans, Buck Wanner
Critical Correspondence Biba Bell, Will Rawls

Movement Research gratefully acknowledges public support from the National Endowment for the Arts (a federal agency); the New York State Council on the Arts with the support of Governor Andrew Cuomo and the New York State Legislature; the New York City Department of Cultural Affairs in partnership with the City Council as well as City Council Member Rosie Mendez; and Materials for the Arts (a program of NYC Department of Cultural Affairs, NYC Department of Sanitation, and NYC Department of Education). Movement Research also gratefully acknowledges the generous contributions of private support from the Andrew W. Mellon Foundation; Arthur B. Monroe Family Fund; Davis/Dauray Family Fund; Harkness Foundation for Dance; James E. Robison Foundation; Jerome Foundation 50th Anniversary Grant; Lambent Foundation; Mertz Gilmore Foundation; New York University Community Fund; Shapiro Family Fund; Trust for Mutual Understanding; William & Karen Tell Foundation; from MRX partner Konstnärsnämnden/The Swedish Arts Grants Committee; and from all of the dear Friends of Movement Research, who contribute financial support, labor and love.

Thanks always to the clergy, staff and congregation of Judson Church; Judson continues to be a beacon for free spirits in the arts and politics and a leader among progressive faith communities in the city and nation for over 100 years. Enormous gratitude to Frances Alenikoff (1920-2012), founder of Eden's Expressway, and to her daughter Francesca Rheannon and family, for their continuing belief in the mission of Movement Research and for keeping alive Frances' spirited example of what lifelong artistry is. Many thanks to Gibney Dance Center for its partnership in hosting the Studies Project series, classes and workshops; and to Danspace Project for hosting classes. Special thanks to East Village Dance Project and GOH Productions, owners and operators of Avenue C Studio.



The Andrew W. Mellon Foundation

